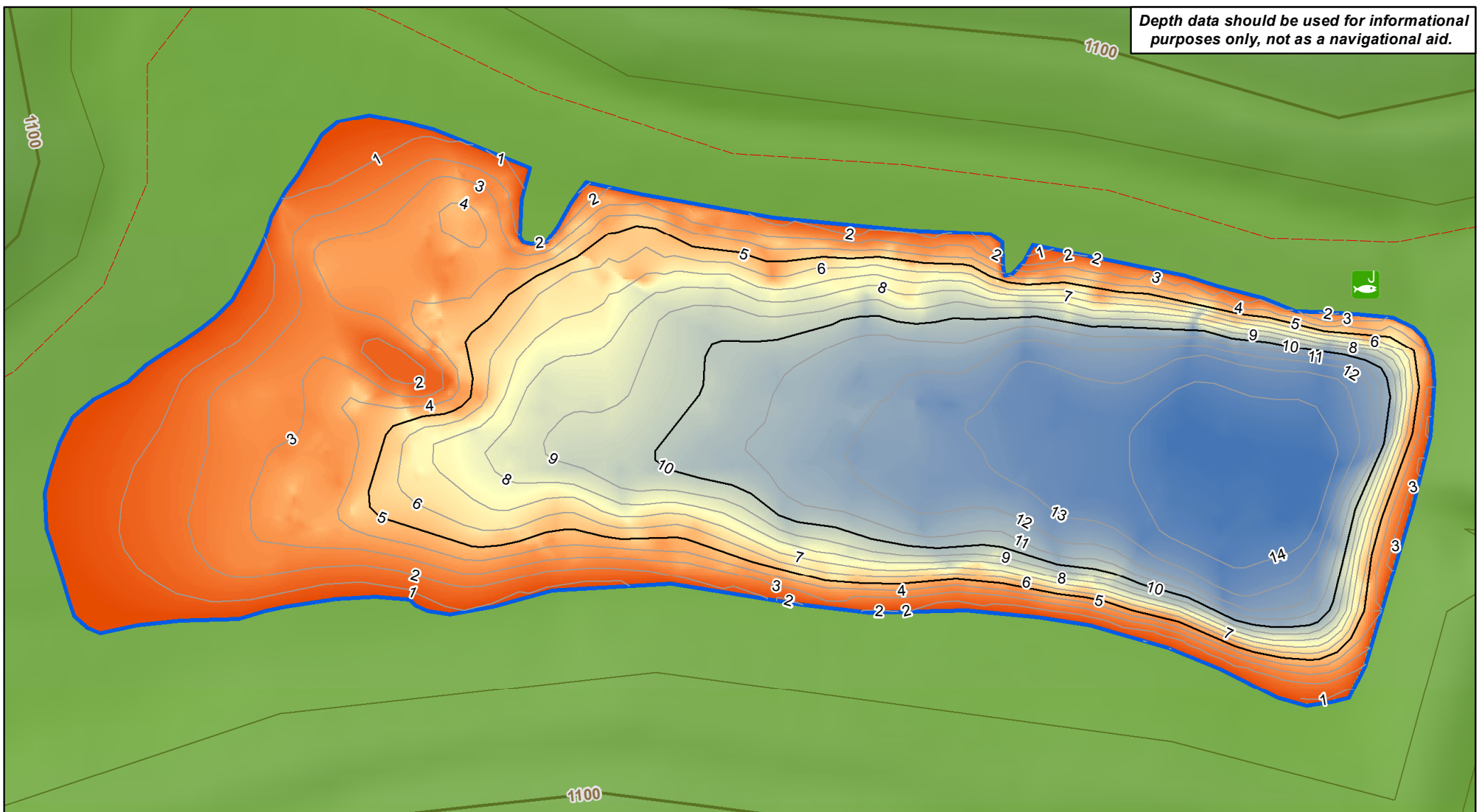






Depth data should be used for informational purposes only, not as a navigational aid.





Legend

-  Public Fishing Access Sites
-  Pedlar Wildlife Management Area

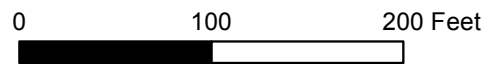
Depth Contours

-  1-Foot Intervals
-  Index Contour

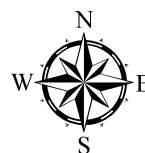
Lake Depth (Feet)

-  High : 15.1
-  Low : 0

Dixon Lake Fishing Guide



1:1,200



This publication was funded by the Wildlife and Sport Fish Restoration Program.



Prepared by:
WV Division of Natural Resources
Wildlife Resources Section, GIS
Elkins, WV 26241
May 10, 2018